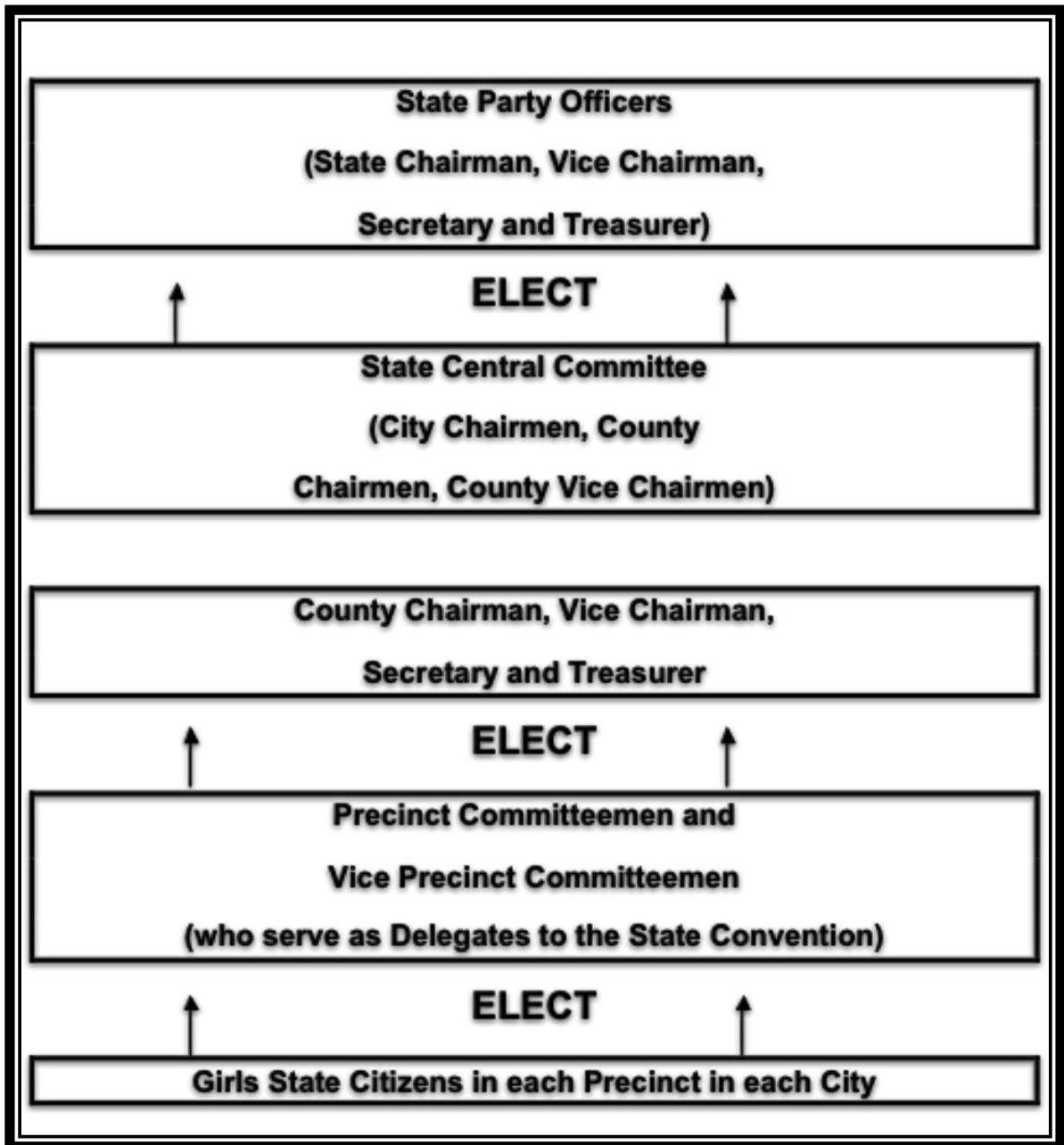


## ALA HGS Political Party Structure

<b>Step 1:</b> All Voters in Each Party in each Precinct (1 or 2 Precincts per City)	<b>Elect:</b> 1 Precinct Committeeman 1 Vice-Precinct Committeeman
<b>Step 2:</b> All Voters in Each Party in each city	<b>Elect:</b> 1 City Chairman 1 City Vice-Chairman
<b>Step 3:</b> The Precinct Committeemen and Vice-Precinct Committeemen in each Party in each County	<b>Elect:</b> 1 County Chairman 1 County Vice-Chairman 1 County Secretary 1 County Treasurer
<b>Step 4:</b> The 7 County Chairmen 7 County Vice-Chairmen and the 18 City Chairmen in each party	<b>Elect:</b> 1 State Party Chairman 1 State Party Vice-Chairman 1 State Party Secretary 1 State Party Treasurer

**\*\*Read the following information from the bottom up.**



NOTE: City Chairmen and City Vice-Chairmen are elected by all citizens in each City.